
Lighthouse Festival Theatre

Relaxed Performance: Visual Guide

The logo for Lighthouse Festival Port Colborne is set against a dark blue background. The word "LIGHTHOUSE" is written in large, white, bold, sans-serif capital letters, slanted upwards to the right. Below it, the word "FESTIVAL" is written in smaller, white, bold, sans-serif capital letters. To the right of "FESTIVAL", the words "PORT COLBORNE" are written in white, bold, sans-serif capital letters inside a bright blue rectangular box that is also slanted upwards to the right.

LIGHTHOUSE
FESTIVAL **PORT COLBORNE**

For more information about relaxed performances email: rp@lighthouse theatre.com

Visual Guide: Table of Contents

3

Theatre Location

4

Arriving to the Theatre

5-7

Theatre and Show Information

8

Accessibility Resources



view of the theatre from Carter Street

Welcome to Lighthouse Theatre

We are happy you are planning to join us for a relaxed performance!

Lighthouse Festival Theatre in Port Colborne, Ontario, on Carter Street within the Roselawn Centre. When looking up directions be sure you are accessing information about Lighthouse since the location is shared.

When you enter the theatre a Front of House staff will be ready to greet you!



view of the parking lot



view of the theatre front entrance



Arriving at Lighthouse

Front of house staff will be at the main entrance, box office, and ticket scanning areas of the lobby in the theatre.

Say hi and feel free to ask anyone wearing a name tag for help if you need it.



scanner for tickets

Ticket Options

Print and Scan

STEPS

Have the tickets that you printed ready and move forward to the ticket scanning station shown by a star in the photo above.

Pick up and Scan

STEPS

To pick up and scan

1. Visit the box office, and tell them your name and the number of tickets you booked.
2. There may be a line, so please wait patiently.
3. Move forward to the ticket scanning station shown by a star in the photo above.



view entering the Lounge from main hallway

The Lounge

Accessing past the main lobby of the theatre.

Things to do in the lounge:

- sit and chat
- listen to music
- read the program
- buy a drink
- buy an ice cream
- or visit the 'chill zone'

The Chill Zone

a quiet place to sit, activities available during the show and at intermission for anyone to use

Wathrooms are off the main hallway as well, accessible washrooms are marked with the blue sign seen below.

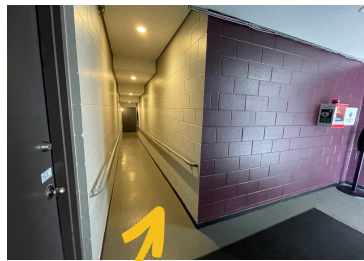


view of wathrooms

Getting to the theatre

The theatre is on floor 1, there is a series of ramps that you will take to get to the theatre.

Front of house staff will support you if needed.

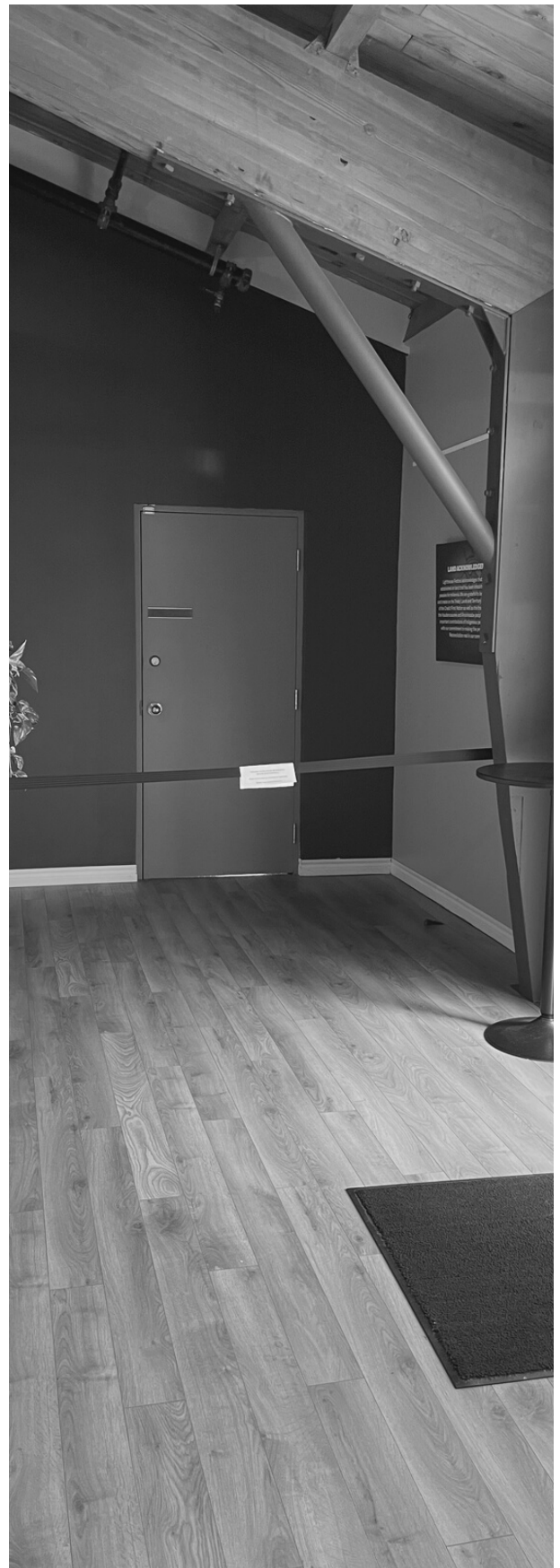


Enter
HERE

Follow the ramp around to the entrance of the theatre where a Front of House staff will give you a program for the show.



view on the ramp



view of the main hallway past the lobby



view of the theatre from the stage

Theatre Seating Options

The theatre opens 30 minutes before the show, you will have the option to move to your seat(s) at that time.

Theatre staff will be available to help you get to your seat if needed.



view of the theatre seats



Section A

SEATING

All main floor seating in section A can be accessible upon request (is page 8 for more details).



Riser

SEATING

All other sections of the theatre are on risers which will require you to walk up 1-8 stairs depending on the location of your seat.

Accessibility during the show

If you are looking for support related to accessibility take a look at the resources in place.

For more information about accessibility check out the **Parking and Accessibility Seating Guide** by using the QR code or by viewing our website.



accessibility resources

Parking INFORMATION



Accessible Parking at the theatre

- 3 accessible spots outside the main entrance

Pick Up and Drop Off

- you are welcome to drop off at the main entrance of the theatre the parking lot is wide and accommodates all sizes of vehicles

Street Parking

- FREE street parking is available on Carter street (in front of the theatre) and Elgin street (behind the theatre)

Mobility SEATING OPTIONS



Any seat in section A can be an accessible seat upon request.

Remain seated in your mobility device during the performance please connect with box office to ensure the seat is moved for you.

Sitting in a theatre seat, and brought a mobility aid for support the seat beside can be removed so you can keep the device close. Let the box office or Front of House staff know and we will make sure the seat is removed.

Box Office 905-834-0833