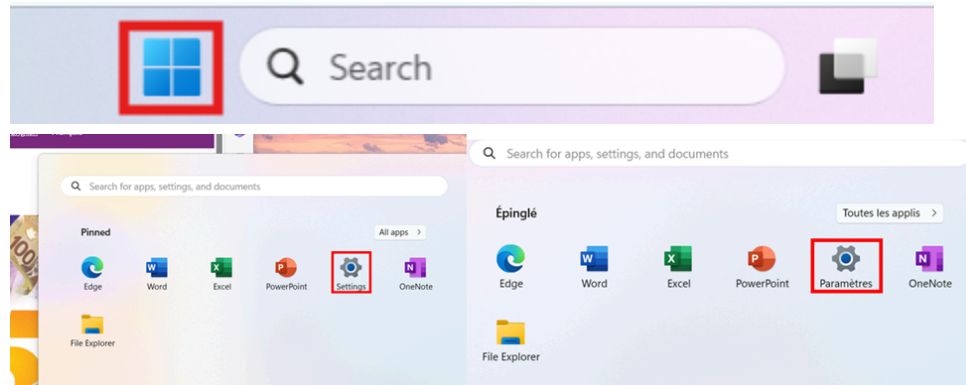


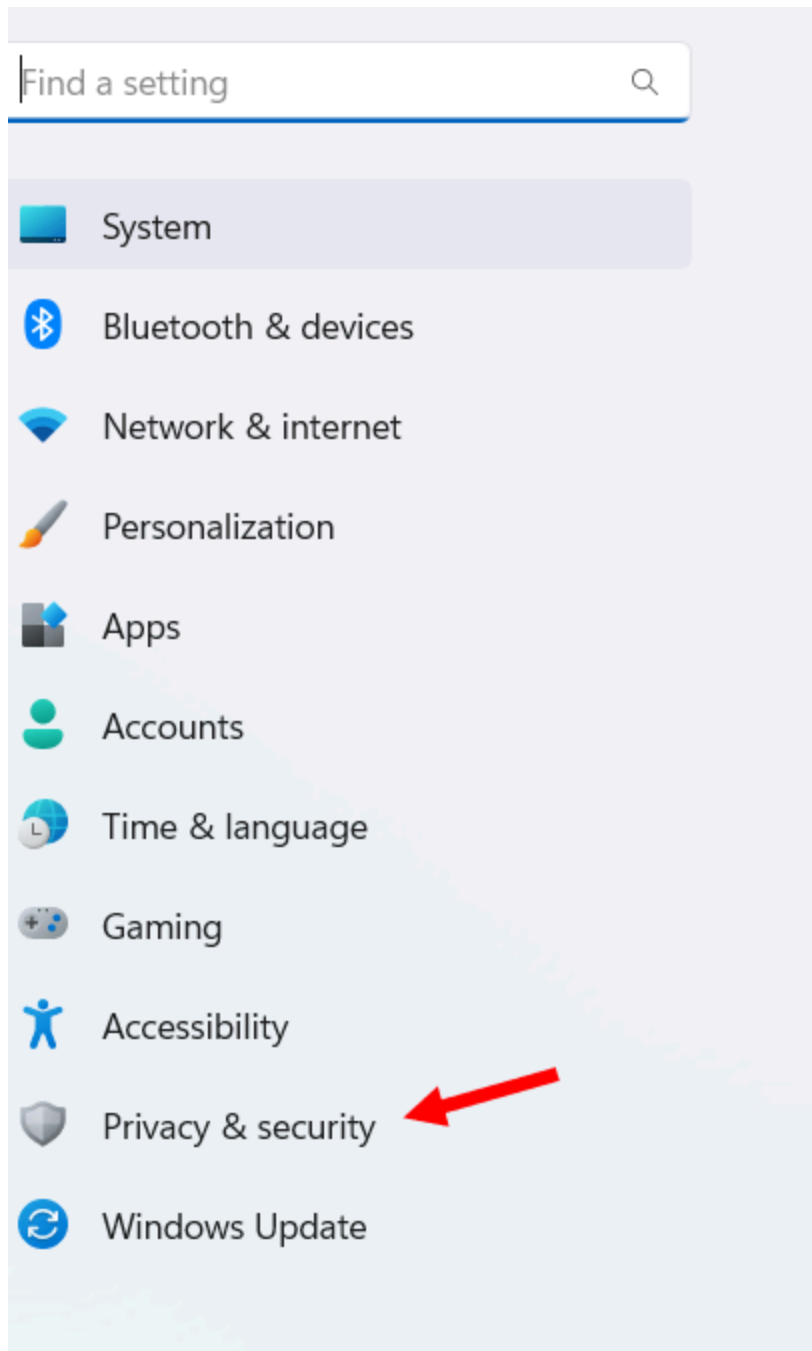
Enabling Location Services on Desktop - Microsoft Edge

Modified on Wed, 16 Jul, 2025 at 10:35 AM

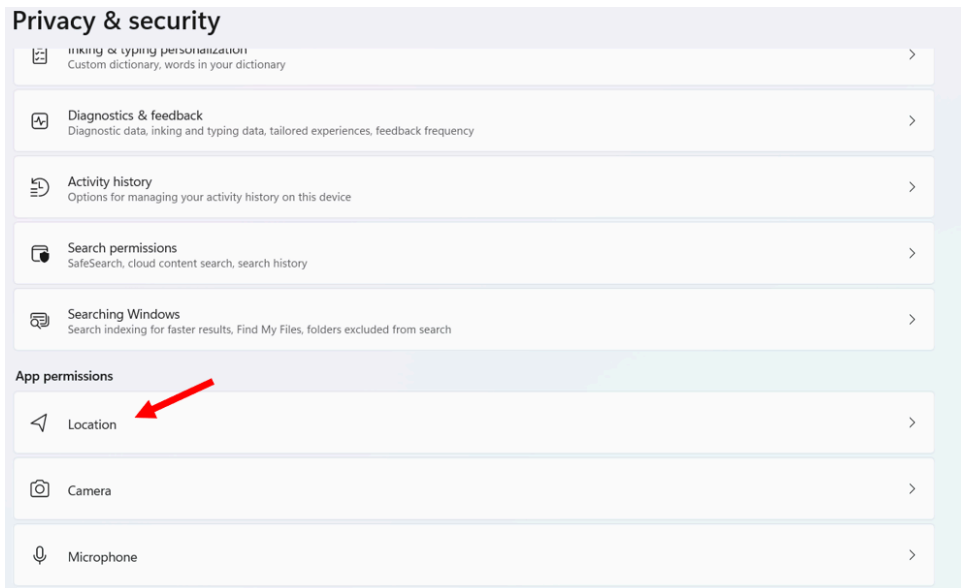
1. Access Windows settings by clicking on the **Windows icon** on the bottom bar of your computer and select the **“Settings icon”** (gear shaped).



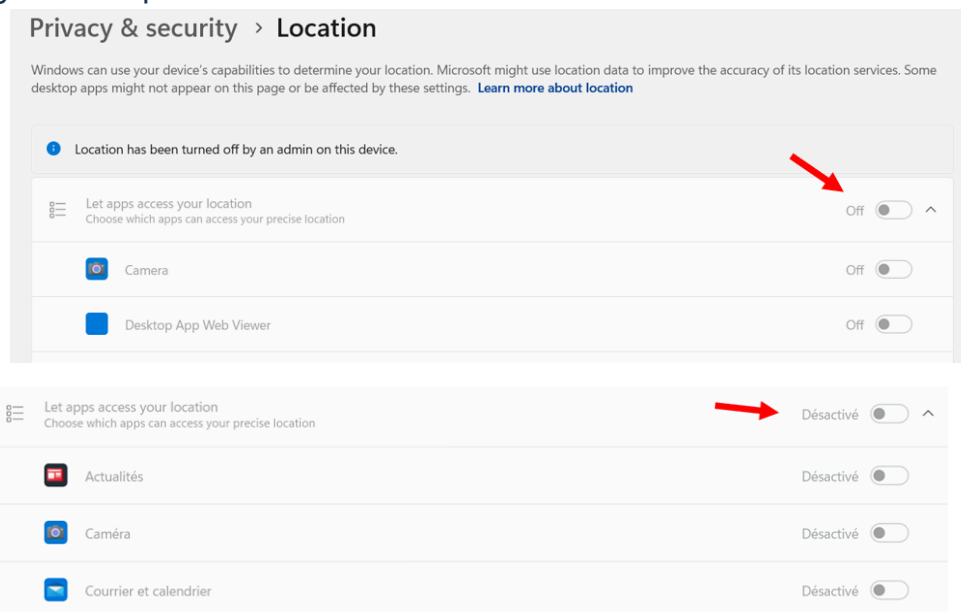
2. Navigate to **Privacy and Security** settings on the left-hand side of the drop down.



3. Scroll down to **App Permissions** and click on **Location**.

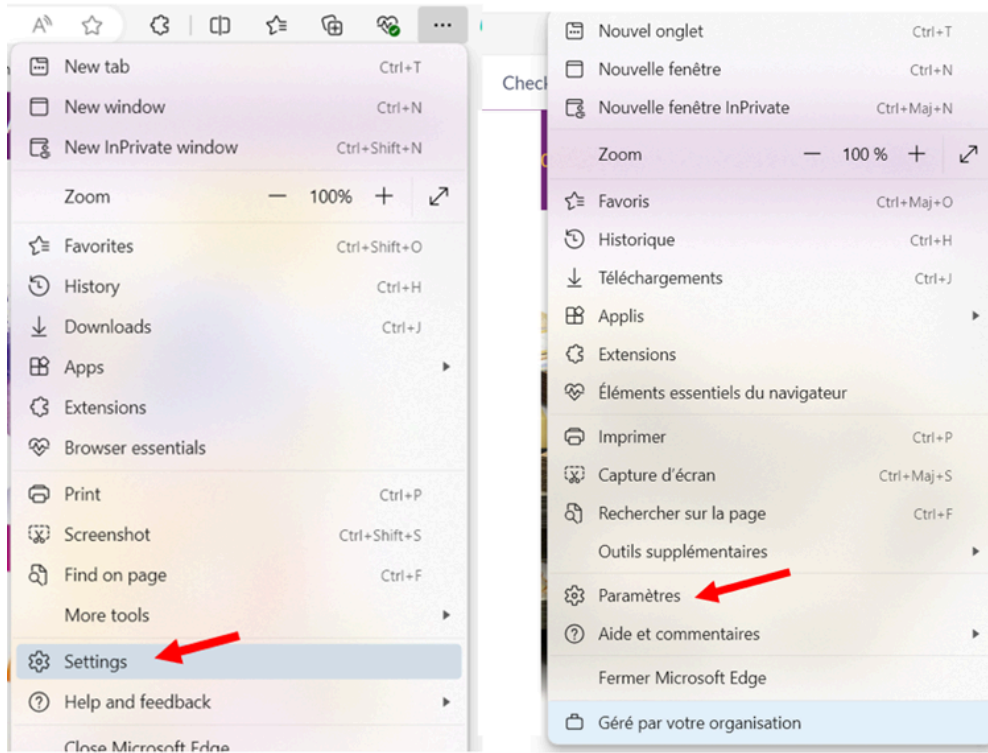


4. Enable location access by toggling on the “let apps access your location” - Review and manage app permissions including Microsoft Edge and Maps.

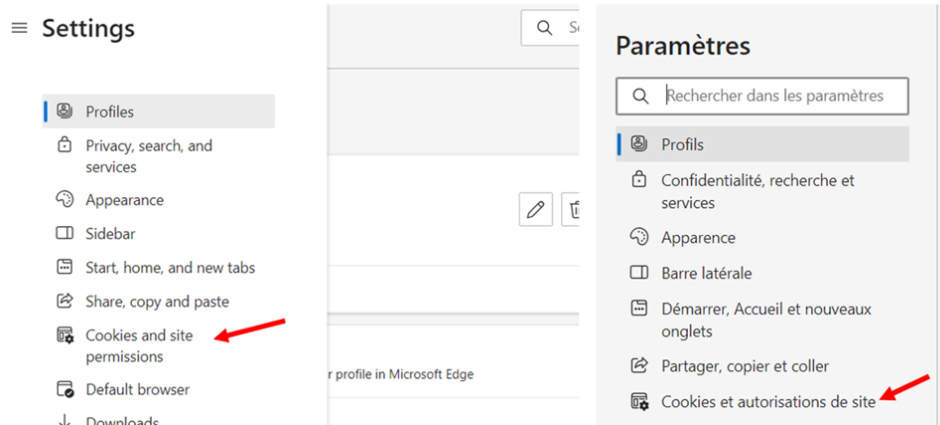


Still encountering issues - Check Microsoft Edge browser settings

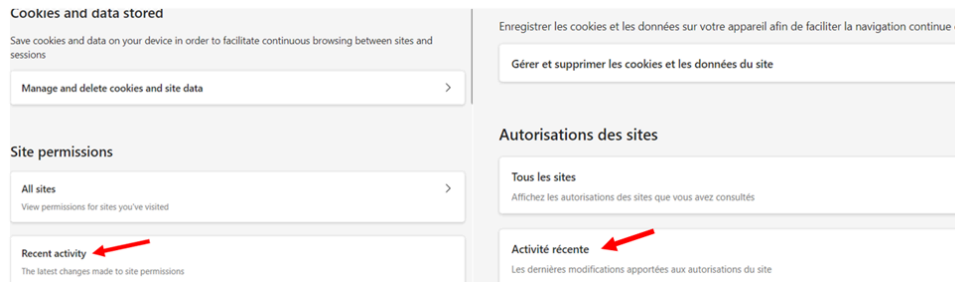
1. Open the website in the Microsoft Edge browser on a Windows desktop.
2. Access Edge settings by clicking on the **three horizontal dots** at the top right corner of the browser window.
3. From the drop-down menu select **Settings icon** (gear shaped).



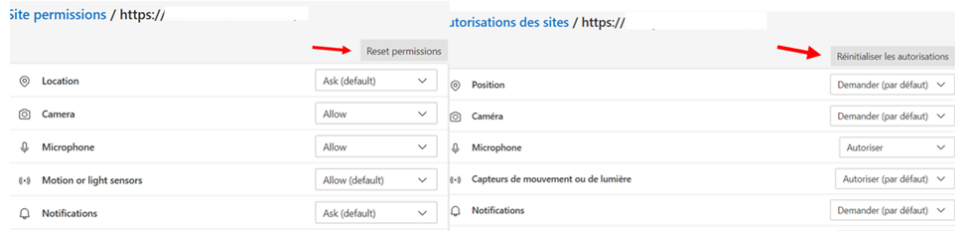
4. In settings click on the **three horizontal lines** in the top left corner and select the **“Cookies and site permission”** tab.



5. Under **Site Permissions**, select the website you’re trying to get entry for which will be under **Recent Activity**.



6. Click on **“Reset Permission”** that is located at the top right.



7. Retry accessing the website and try a purchase. Make sure to grant location permission in Edge by clicking on the options to allow the website to access your location.